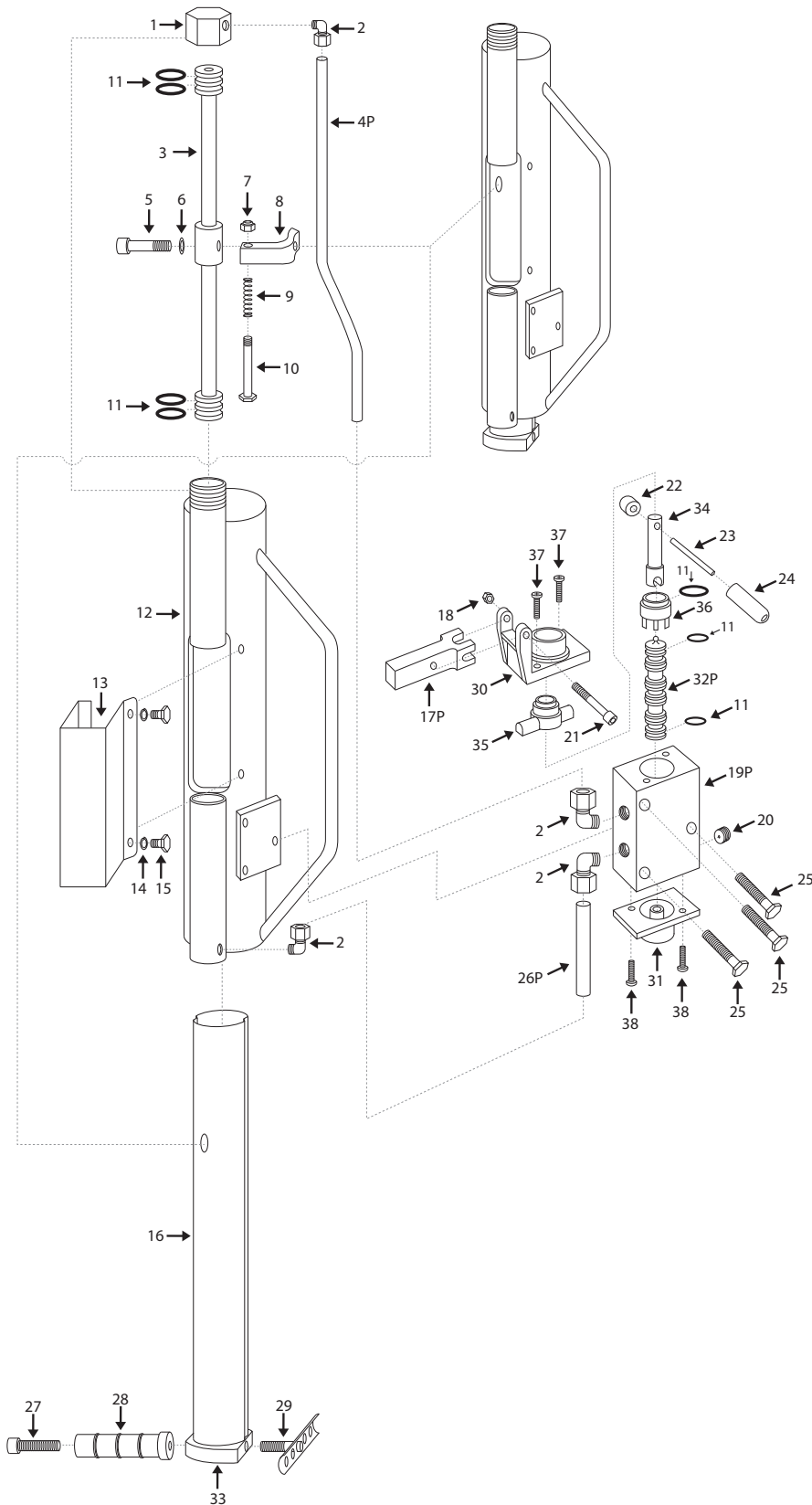


MAN SAVER POST DRIVER™

Model: Parker



Part Number	Qty.	Cost	Total
1 - Cylinder Cap	1	\$6.79	
2 - 90° Brass Fitting	4	\$3.02	\$12.08
3 - Piston	1	\$37.75	
4P - Long Tube	1	\$4.53	
5 - Allen Bolt	1	\$4.15	
6 - Lock Washer	1	\$1.51	
7 - Nut	1	\$0.75	
8 - Machined Plunger Arm	1	\$7.75	
9 - Spring	1	\$1.29	
10 - Plunger Arm Bolt	1	\$3.02	
11 - O-Ring Kit	4	\$1.51	\$6.04
12 - T-Post Driver Body	1	\$264.25	
13 - Guard	1	\$12.08	
14 - Lock Washer	2	\$0.30	\$0.60
15 - Bolt	2	\$0.75	\$1.50
16 - T-Post Sleeve	1	\$60.00	
17P - Valve Actuator Arm	1	\$7.75	
18 - Lock Nut	1	\$0.98	
19P - Valve Body	1	\$98.15	
20 - Orifice	1	\$3.75	
21 - Allen Bolt	1	\$1.13	
22 - Small Weight	1	\$1.13	
23 - Roll Pin	1	\$0.75	
24 - Large Weight	1	\$2.26	
25 - Bolt	3	\$1.13	\$3.39
26P - Short Tube	1	\$1.13	
27 - Allen Bolt	1	\$3.02	
28 - Handle	1	\$8.30	
29 - T-Post Clamp	1	\$12.83	
30 - Valve Top	1	\$46.03	
31 - Valve End Cap	1	\$20.88	
32P - Spool Kit	1	\$31.00	
33 - Die, T-Post	1	\$10.00	
34 - Valve Pin	1	\$10.00	
35 - Detent Housing	1	\$5.46	
36 - Parker Bore Insert	1	\$4.76	
37 - Long Screw (16mm)	2	\$0.30	\$0.60
38 - Short Screw (12mm)	2	\$0.30	\$0.60